



PRINCESS V78





PRINCE

Powerful, sleek and contemporary, the Princess V78 is built to excite the emotions and indulge the senses. Engineered using the latest infusion technology to reduce weight and improve fuel efficiency, she delivers an outstanding performance and is one of the most dynamically capable craft of her class.

Whether relaxing or socialising, the spacious cockpit provides the perfect space for both with generous seating, a highly equipped wetbar and a large sunbed. The tender garage is large enough for a 4m jet-RIB and this together with the hydraulic platform make watersports a real joy. For a quieter escape, the foredeck features a walk-through coachroof providing additional seating for a secluded aperitif.

Sliding glass doors and a powered drop window open up the incredibly light saloon to the cockpit to create one expansive

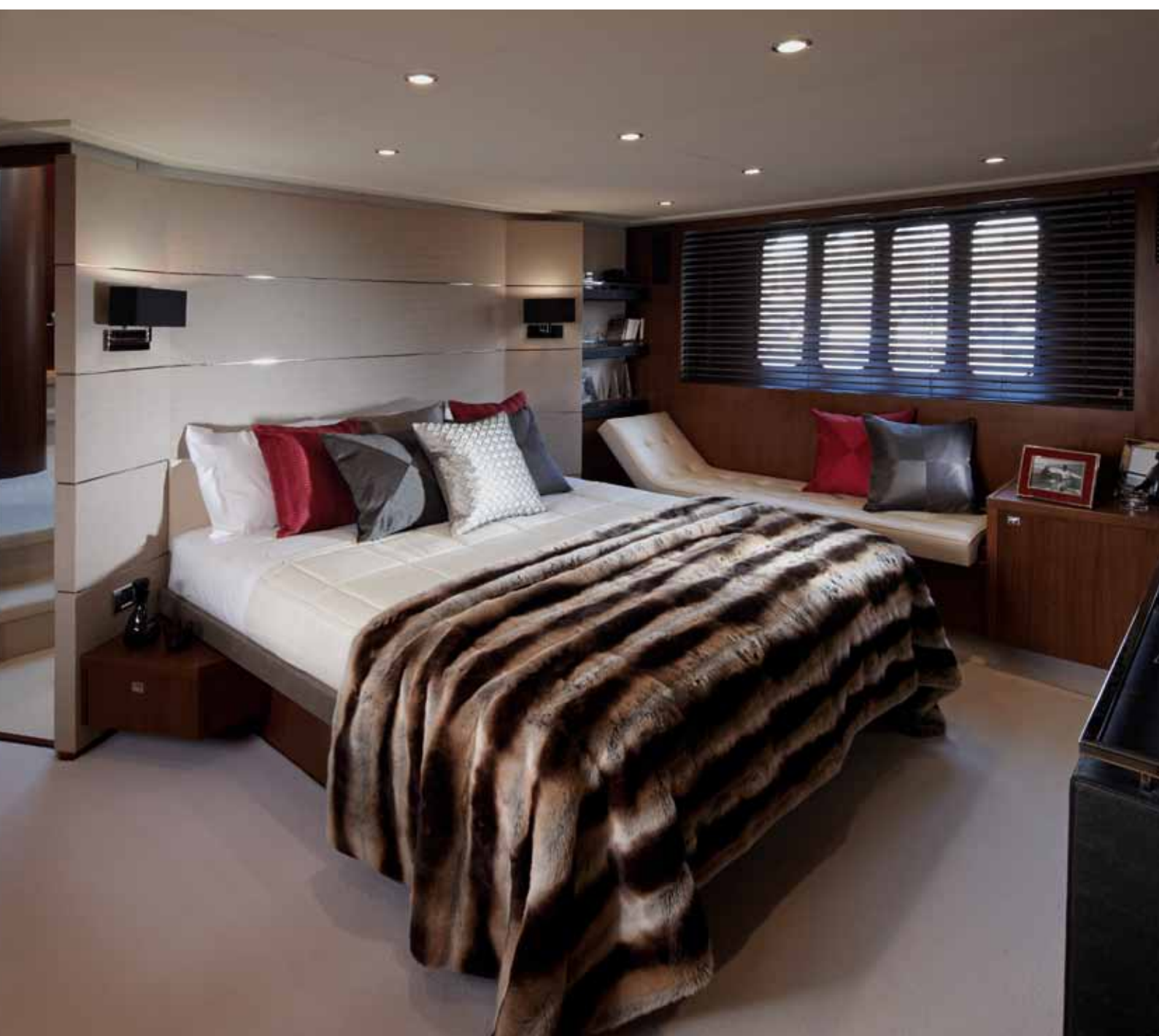
entertaining space which is enhanced by the contemporary styling and impeccable choice of finishes. The forward dining area is comfortable and is situated under a sliding sunroof, it also shares the views and sightlines of the helm area for a true open boating sensation.

The stylish lower accommodation is built to the highest of standards with a highly equipped galley and two en-suite cabins. The sub-cabin stateroom sits amidships providing wonderful views from large windows on both sides. The guest cabins include a double with en-suite bathroom and further twin cabins to port and starboard. A three cabin layout can be specified with the starboard cabin with a private head which is furnished with a huge wardrobe for the perfect hide-out.











MAIN DECK LAYOUT



LOWER ACCOMMODATION LAYOUT

DIMENSIONS	
Beam (aft)	78ft 2in (23.83m)
Beam (mid)	76ft 4in (23.27m)
Beam (forward)	18ft 6in (5.66m)
Depth	5ft 5in (1.65m)
Weight (Twin CAT C32 A)	47,500 kg* (104,719 lbs)
Water capacity	1,206 gal/1,449 US gal/5,486L
Water capacity (with generator)	245 gal/294 US gal/1,112L
EQUIPMENT	
Steering system	Electro-hydraulic steering system
Weight	529lb (239kg)
Electrical system	2 x 80-amp float battery chargers
Generator	Generator (22.5kW)
Anchor winch	Electric anchor winch

Trim tabs	Electro-hydraulic trim tabs with indicators
Autopilot	Autopilot
VHF	VHF with DSC R/T
Radar	Colour radar with scanner and GPS/chart plotter (twin displays)
Speed and distance log	Speed and distance log
Echo sounder	Echo sounder with alarm
Searchlight	Remote control searchlight
Microwave/oven/grill	Combination microwave/conventional oven/grill
Refrigerator	Full height refrigerator with deep freeze
Icemaker	Icemaker
Dishwasher	Dishwasher
Cockpit wetbar	Cockpit wetbar with sink, top loading coolbox, electric barbecue, waste bin and stowage
Toilets	Electric quietflush toilets with holding tank
TV/DVD	Saloon LED TV/DVD with surround-sound system
Transom platform	Teak-laid transom platform/cockpit deck/steps to side decks
Cushions	Cockpit sunbed and cushions

Saloon door	Double opening stainless-steel framed saloon door with drop window
Sunroof	Hard top with electrically operated sliding sunroof
Garage	Electro-hydraulic opening garage with storage for tender or jet ski
Transom door	Transom door
Transom shower	Transom platform with electro-hydraulic raise/lower mechanism
Shower	Hot and cold transom shower
Tonneau cover	Tonneau cover

ENGINES - DIESEL

Engines	Twin Caterpillar C32 A (2 x 1723mhp)
Speed range	Speed range: 35-37 knots †
Engines	Twin MTU 12V 2000 M93 (2 x 1822mhp)
Speed range	Speed range: 36-39 knots †
Engines	Twin Caterpillar C32 A (2 x 1825mhp)
Speed range	Speed range: 36-39 knots †

FITTINGS

Visible electric anchor winch with foredeck
helm position controls
Stowing 50kg/110lb Delta anchor with
chain
Rope storage locker
Rinse or wash facility
Head roller with automatic anchor launch
retrieve
Stainless-steel bow, stern and spring cleats (8)
Stainless-steel pulpit and guard rails
Electric sternline winches
Stainless-steel coachroof handrails
Coachroof lockers for storage of fenders,
and sunbed cushions
Cabin hatch
Rubbing band with stainless-steel insert
Set of IMCO navigation lights
Working light
Spotlight with remote control
Electric horns
Freshwater and water fillers
Electro-hydraulic telescopic passerelle (4.4m) with
remote control
LED docking lights
Deck sunbed with electrically adjustable headboard

DECKING

Decking
Shaped seating/dining area with folding table and
optional L-shaped seat with coffee table
Deck wetbar with sink, top loading coolbox, electric
cucine, waste bin and stowage
Decked aft
Storage garage for dinghy/jet ski and general stowage
Electro-hydraulic aft door and electric winch
Storage for dinghy/jet ski retrieval
Aft storage (for 2 x 8 man)
Access door to crew cabin
240v shore support inlet
Storage lockers
Stainless-steel grabrails
Deck lighting
Deck speakers linked to saloon surround sound system
Cockpit gates leading to aft deck and to bathing
Storage arm with raise/lower facility (400kg capacity), hot
cold transom shower, foldaway swimming ladder
Deck decking
Cabin cover with zip door

HELM POSITION

Helm seats with electric adjustment for helmsman
Helm control systems panel
Access to side deck
Tinted glass windscreen clear for unimpaired
vision
Instrument panel
Engine instrumentation
Gauges
Electronic engine and gear shift controls
Remote-assisted electronic steering with hydraulic
assist
Propeller thruster controls
Helm position indicator
Electro-hydraulic trim tab controls with indicators
Weather radar with scanner and GPS/chartplotter
Displays
Compass
Speed compass
Depth log
Sounder with alarm
DSC R/T
Winch remote control
Spotlight remote control
Storage area
Screen wipers with freshwater wash
Pump controls with visual 'pump running' indicators
Contamination alarm system
Conditioning outlets
Ventilator
Deck lighting

DECK SALOON

- U-shaped sofa with coffee table to starboard
- Port sofa
- Bar unit incorporating refrigerator, bottle and glass storage
- Entertainment centre incorporating LED TV with
powered lift linked to surround sound system
- L-shaped dinette
- All windows in toughened safety glass
- Electric opening window portside
- Blinds, curtains or sunscreens to all windows and doors
- Overhead downlighters and concealed lighting
- Electrically operated opening roof
- Double opening stainless-steel framed saloon door
with drop window
- Full air-conditioning

GALLEY

- Granite/marble worktop
- Four-zone ceramic hob
- Combination microwave/conventional oven with grill
- Icemaker
- Dishwasher (8 place)
- Stainless-steel sinks with Monobloc mixer taps
- Full height fridge/freezer
- Storage cupboards, drawers and lockers
- Waste bin
- Opening portholes
- Combination washer/dryer and storage in lobby area
- Air-conditioning

ACCOMMODATION

- All cabins feature opening and/or fixed portholes, 240v
power points and air-conditioning
- All bathrooms feature opening portholes, electric
quietflush toilets with holding tank and 240v shaver points

OWNER'S STATEROOM

- Large double bed
- Dressing table with chair
- Walk-in wardrobe
- Built-in safe
- Chaise longue
- Drawers, cupboards and storage lockers
- Overhead and individual berth lights
- LED TV with surround sound entertainment system

En-suite bathroom:

- Twin washbasins with Monobloc mixer taps
- Separate shower cubicle with automatic shower
pump-out
- Extractor fan
- Mirror
- Storage lockers

FORWARD GUEST CABIN

- Large double bed
- Vanity unit with storage
- Wardrobe with shelves
- Drawers, cupboards and storage lockers
- LED TV
- Overhead and individual berth lights
- Deck hatch with fly screen and blind

En-suite bathroom:

- Washbasin with Monobloc mixer tap
- Separate shower cubicle with automatic shower
pump-out
- Extractor fan
- Mirror
- Storage lockers

PORT GUEST CABIN

- Two full-size single berths
- Wardrobe with shelf
- Storage lockers
- Downlighters and individual berth lights

PORT GUEST CABIN (CONTINUED)

En-suite bathroom:

- Washbasin with Monobloc mixer tap
- Separate shower cubicle with automatic shower
pump-out
- Extractor fan
- Mirror
- Storage locker
- Separate access from passageway as well as from cabin

STARBOARD GUEST CABIN

- Two single berths
- Wardrobe
- Storage locker
- Downlighters and individual berth lights

CREW CABIN

- Two full-size single berths, storage lockers and
enclosed WC, washbasin and separate shower
compartment

INTERIOR FINISH

- Furniture finished in a choice of Serotina Cherry or Light
Oak with either a satin or high gloss finish. Walnut is
available as an option
- Galley in choice of granite or marble
- Bathroom units and floors fitted with granite or marble
- Choice of upholstery fabrics, carpets and curtains from
co-ordinated range
- Timber-laid galley
- Timber-laid saloon floor with carpet inlay

POWER AND DRIVE SYSTEMS

- Engine room soundproofed
- High-volume air intakes
- Engine room extractor fan with electronic time delay
- Engine exhaust silencers and water-cooled exhausts
- Engine beds integrally moulded with hull for strength
and vibration absorption
- Forward and aft engine-room bulkheads integrally bonded
- Engines flexibly mounted
- Automatic fire extinguisher with remote override control
- Automatic and manual bilge pumps
- Engine-room lighting
- Propeller shafts in Marinemet
- 5-bladed propellers in nickel aluminium bronze
- High-speed balanced rudders
- Cathodic protection for sterngear
- Sterngear, engines, fuel tank fillers, etc all
electrically bonded
- Power-assisted electro-hydraulic steering system
- Single-lever electronic engine controls
- Bow thruster (240kgf/529lbf)
- Freshwater outlet point in engine room
- Dripless shaft seals

ELECTRICAL SYSTEMS

24 volt:

- 4 x heavy duty batteries for engine starting
- 6 x heavy duty auxiliary batteries
- Engine alternators charge both banks of batteries via
automatic switch charging system
- 2 x 80amp battery chargers charge both banks of
batteries via an automatic switch charging system
- Battery paralleling system with remote control
at helm position
- Remote battery master switches with control switch
at main panel
- Circuit breakers on all circuits
- 24-12v dropper for certain navigation and radio circuits

220/240 volt:

- 22.5kW diesel generator with own starting battery
and specially silenced exhaust
- Shore support inlets
- Generator/shore support change-over system
- Power points in saloon, galley (double), owner's
stateroom, guest and crew cabins

ELECTRICAL SYSTEMS (CONTINUED)

220/240 volt:

- Polarity check system
- Earth leakage safety trip
- Shaver points in all bathrooms

FUEL SYSTEM

- Twin fuel tanks (in NS8 marine grade) with
interconnection system giving 1200
gallon/5486 litre capacity
- Fuel fillers on both side decks
- High-capacity duplex fuel filters/
changeover cocks and visual control
at console
- Remote fuel shut offs in helm location
- Fuel gauges on helm console

WATER SYSTEM

- Water tank totalling 200 gallons/757
909 litres plus 45 gallons/54 US gallons
hot water calorifier
- Automatic water pump with filter
- Main circuit breaker at switch panel
- Water level gauge
- Deck filler
- Electric quietflush WC system with
10 US gallon/400 litre holding tank,
electric overboard discharge with
system as well as dockside discharge

FIRE EXTINGUISHERS

- Automatic/manual override fire extinguishers in
engine room with warning system at helm
- Hand-operated fire extinguishers in
stateroom, port, starboard and fore
galley, helm position and crew cabin

BILGE PUMPS

- Automatic electric bilge pumps (with
engine room, forward accommodation)
- High capacity manual bilge pumps
and suction points in same areas

OTHER ITEMS SUPPLIED AS STANDARD

- Set of cutlery, crockery and crystal
- Set of towels
- Fenders (6) and warps (4)
- Ensign staff
- First aid kit
- Boathook
- Owner's manual
- Engine manual
- Tool kit
- Manual winch handle
- Ship's document cases
- Electric vacuum cleaner

Princess Yachts International plc
The Harbour
100 Harbour Street
St. John's, Antigua
PL1 3QG

+1 (868) 463 203888

+1 (868) 463 203777

www.princessyachts.com

www.princessyachts.com